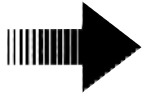


## Toilet Seat Installation Procedure

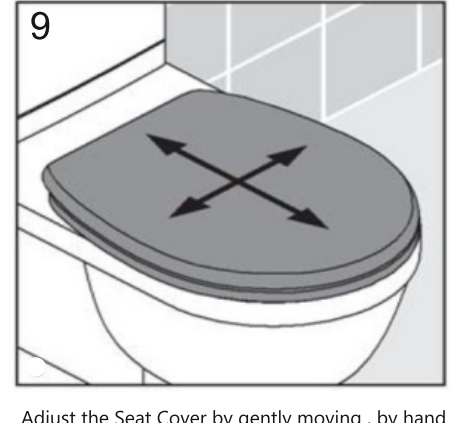
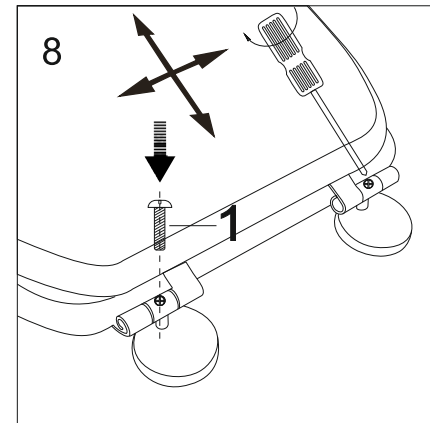
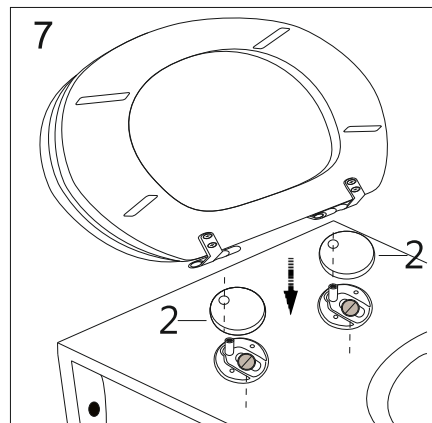
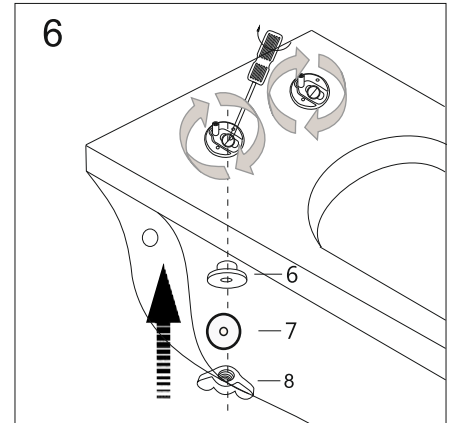
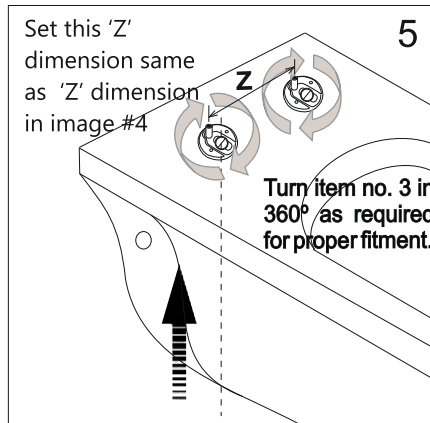
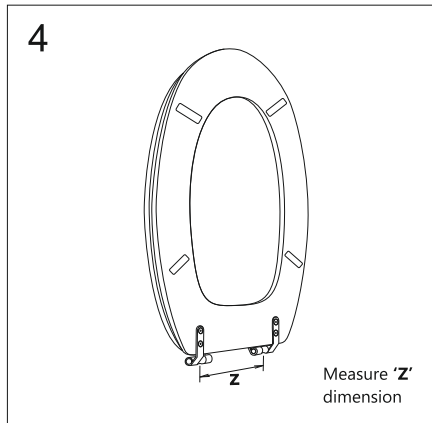
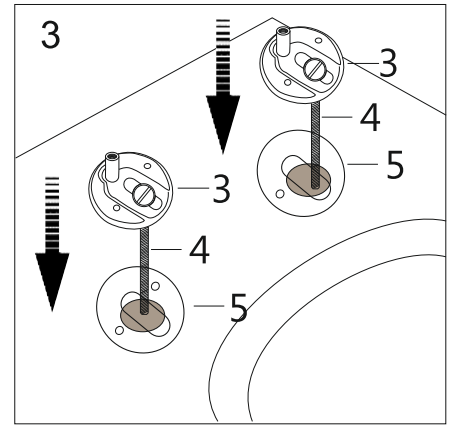
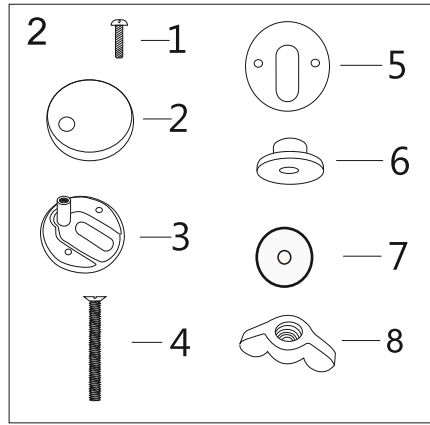
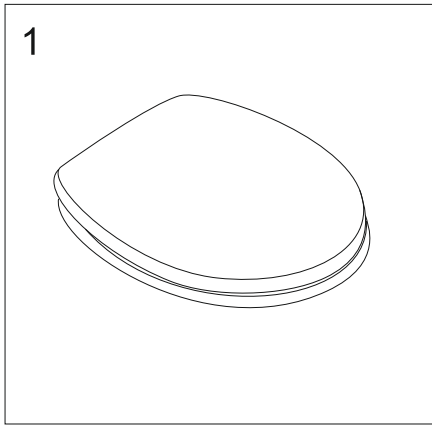
Hinge Code : **PBn** | Bottom Loading / Fixing



**YouTube** - Seat Cover  
Installation video  
<https://www.youtube.com/watch?v=kQP2DnSNC3U>

Thank you for selecting **Adshank Toilet Seat Cover** - the benchmark of Luxury and Premium quality.

To ensure this product is installed properly, please read and follow the instruction step-wise carefully.



For further assistance/support in Installation of this Seat or any other Customer Support , please contact whatsapp@7875767353 or call 9323167353

**'Adshank'** - is s Registered Trademark. All Rights reserved.

Adshank Industries reserve the right to make technical improvement and enhance the appearance of the product shown.

All drawings contain the necessary measurements which are subject to change and to standard tolerance. They are stated in mm/cms and are non-binding. Exact measurement in particular for customized scenarios, can only be taken from the finished Seat / Product.

The above pictures may not exactly depict toilet seat and components and the procedure/illustration is informative and non binding.

Adjust the Seat Cover by gently moving , by hand only, left and right, to perfectly fit with commode profile. Then fully tighten the wing nut ( no.8 ) by hand only and Screw ( no. 1 ) by Star Screw driver.



**Adshank**<sup>®</sup>  
Toilet Seat Covers



[www.adshankindustries.com/shop](http://www.adshankindustries.com/shop)